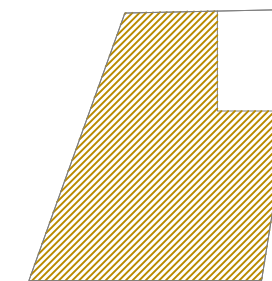




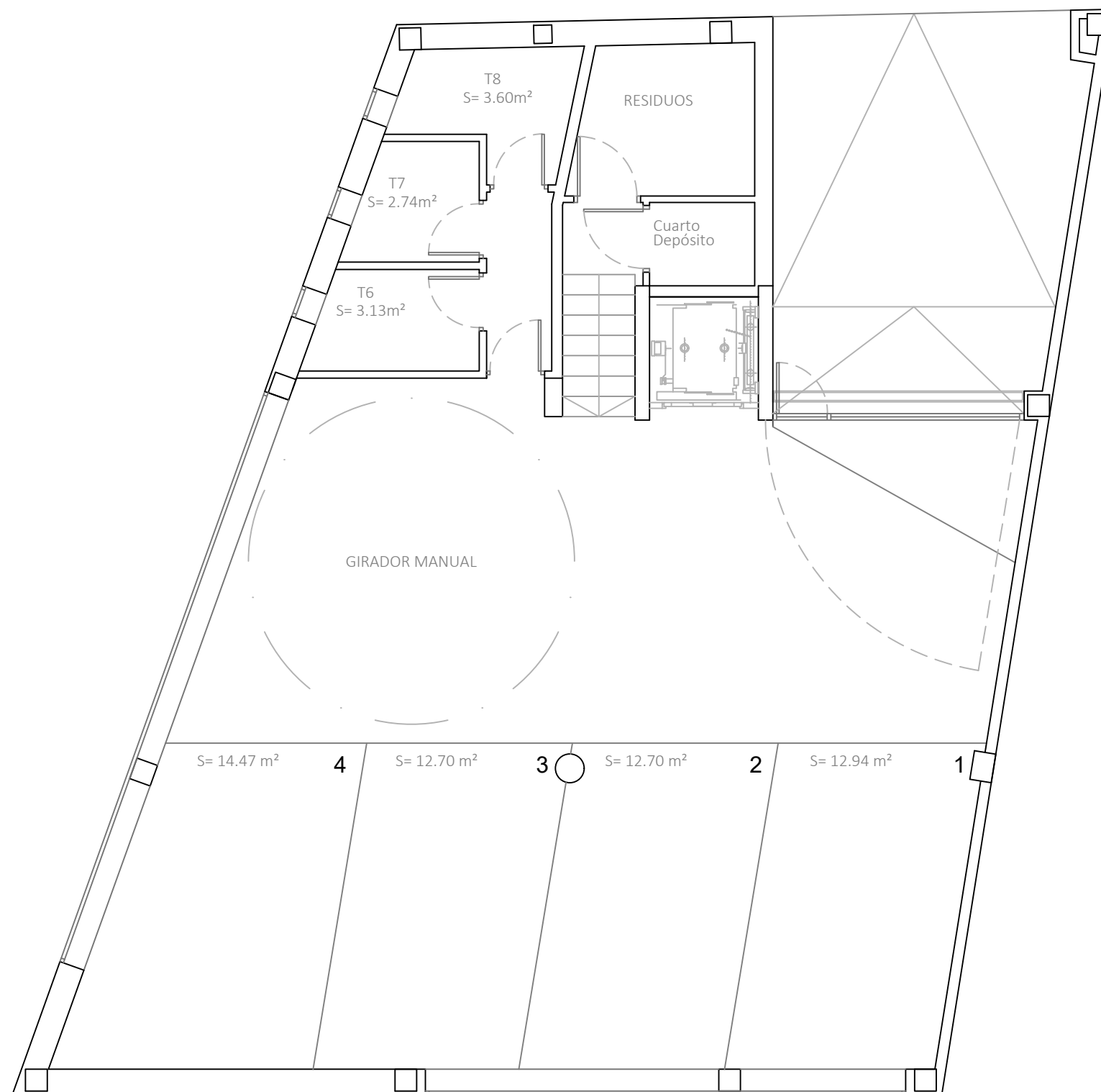
IBERIA 15

VIVIENDAS, GARAJES Y TRASTEROS
C/ Iberia nº15- Zaragoza

N



PLANTA SÓTANO



PLANTA SÓTANO

SUPERFICIES UTILES

CERRADAS

Plaza 1:	12.94 m ²
Plaza 2:	12.70 m ²
Plaza 3:	12.70 m ²
Plaza 4:	14.47 m ²
Trastero 6:	3.13 m ²
Trastero 7:	2.74 m ²
Trastero 8:	3.60 m ²